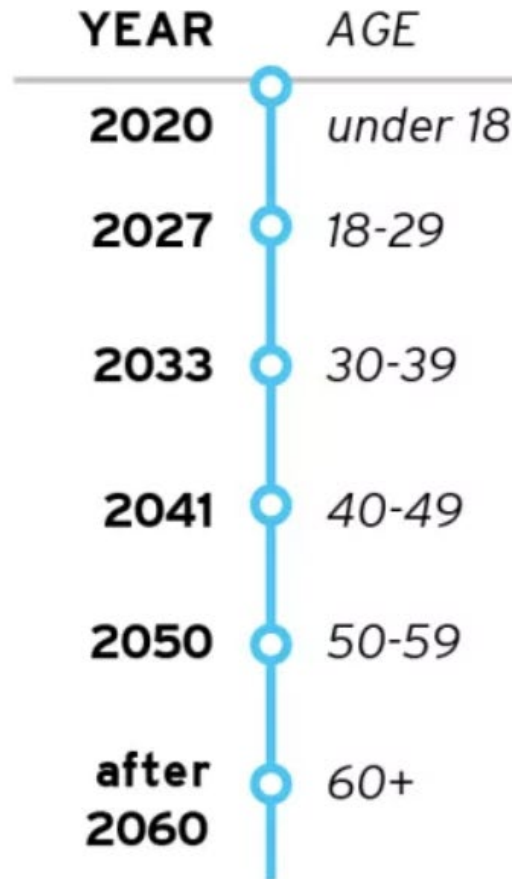


The Agile College: Navigating Demographic Change

Nathan Grawe
Professor of Economics, Carleton College

Year When Whites Become Minority by Age Group

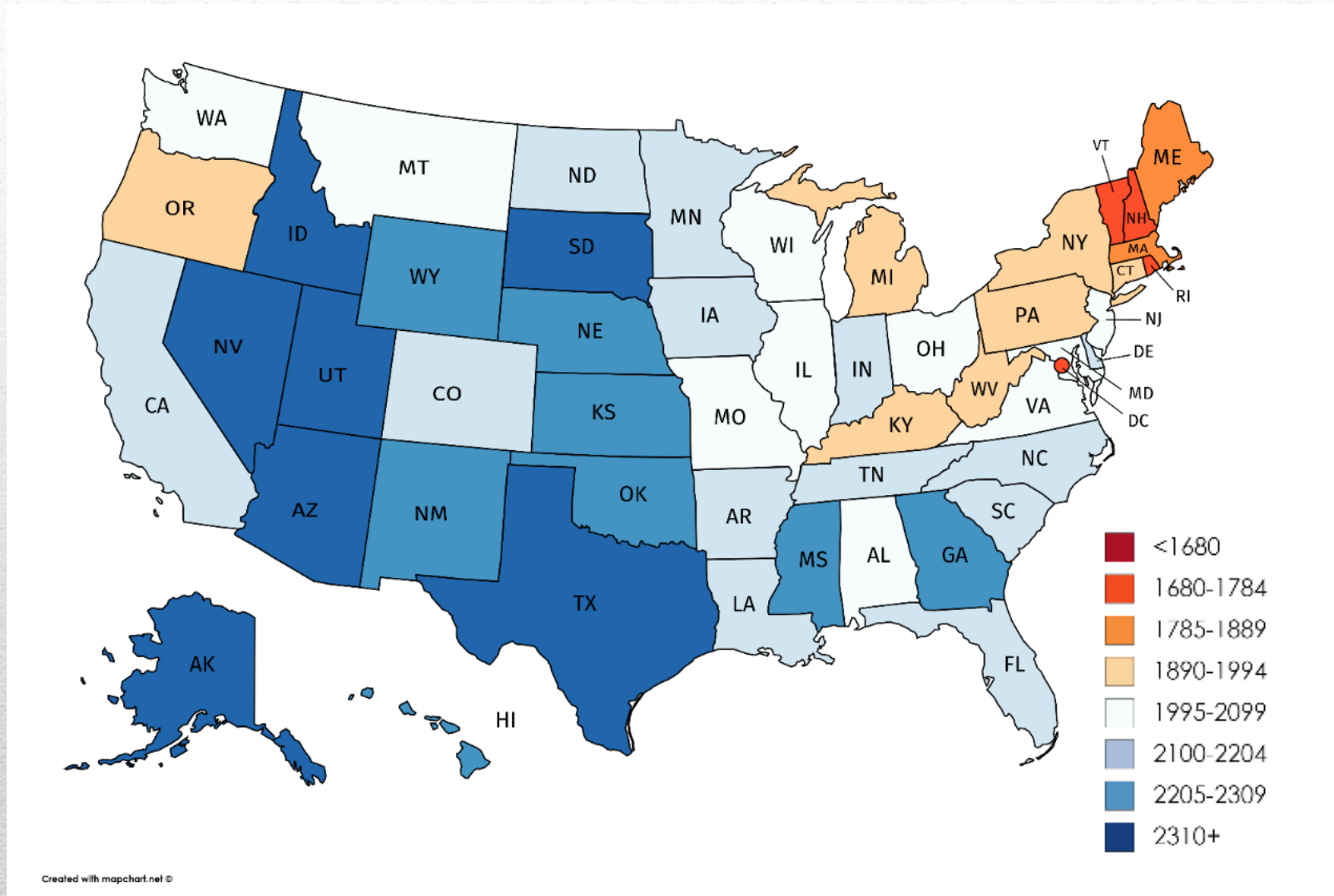


Source: William H Frey analysis of U.S. Census population projections released March 13, 2018 and revised September 6, 2018

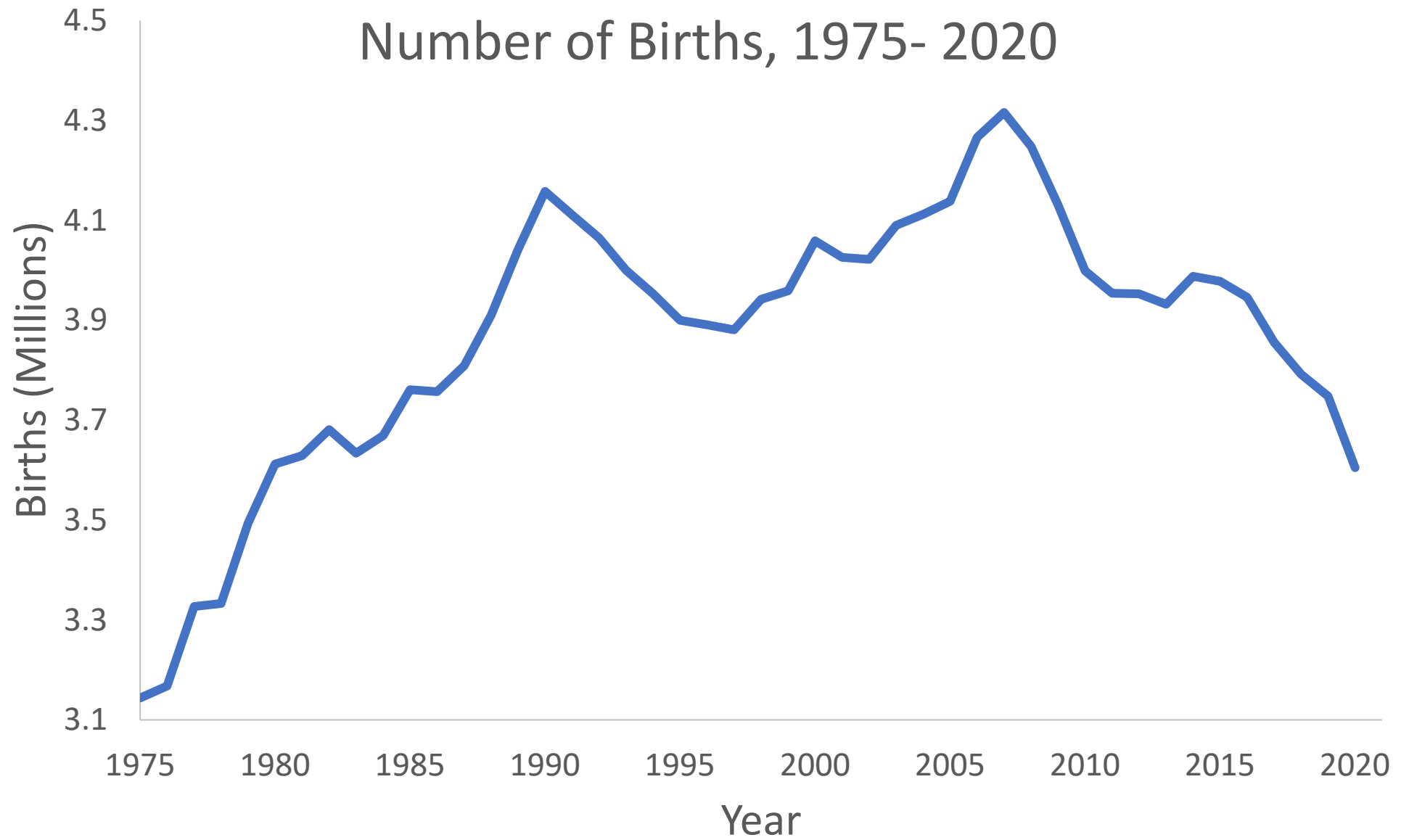


Metropolitan Policy Program
at BROOKINGS

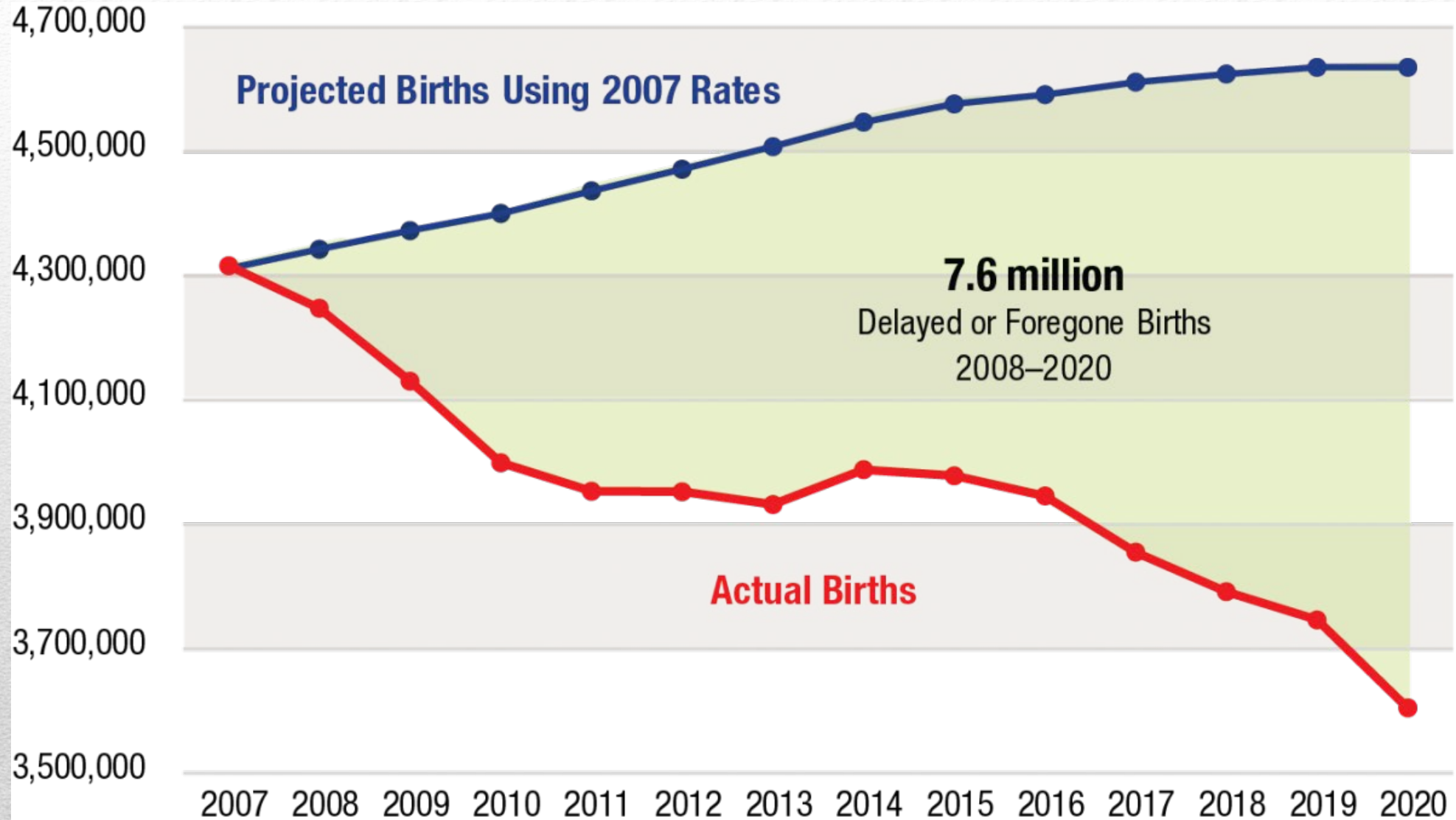
Total Fertility Rate per 1000 Women, 2007



Source: National Vital Statistics Reports Vol. 58, no. 24

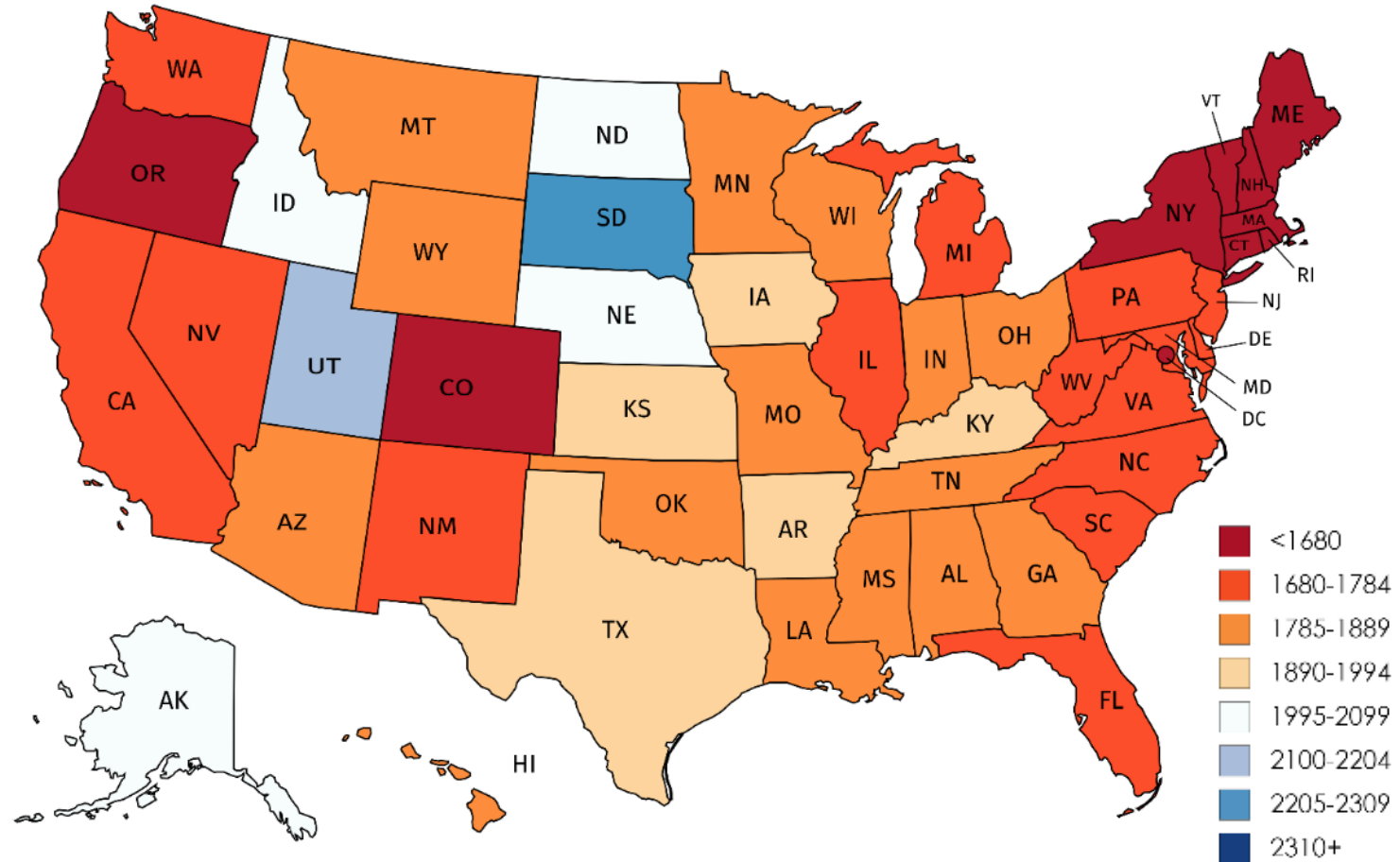


Source: National Vital Statistics Reports, various years



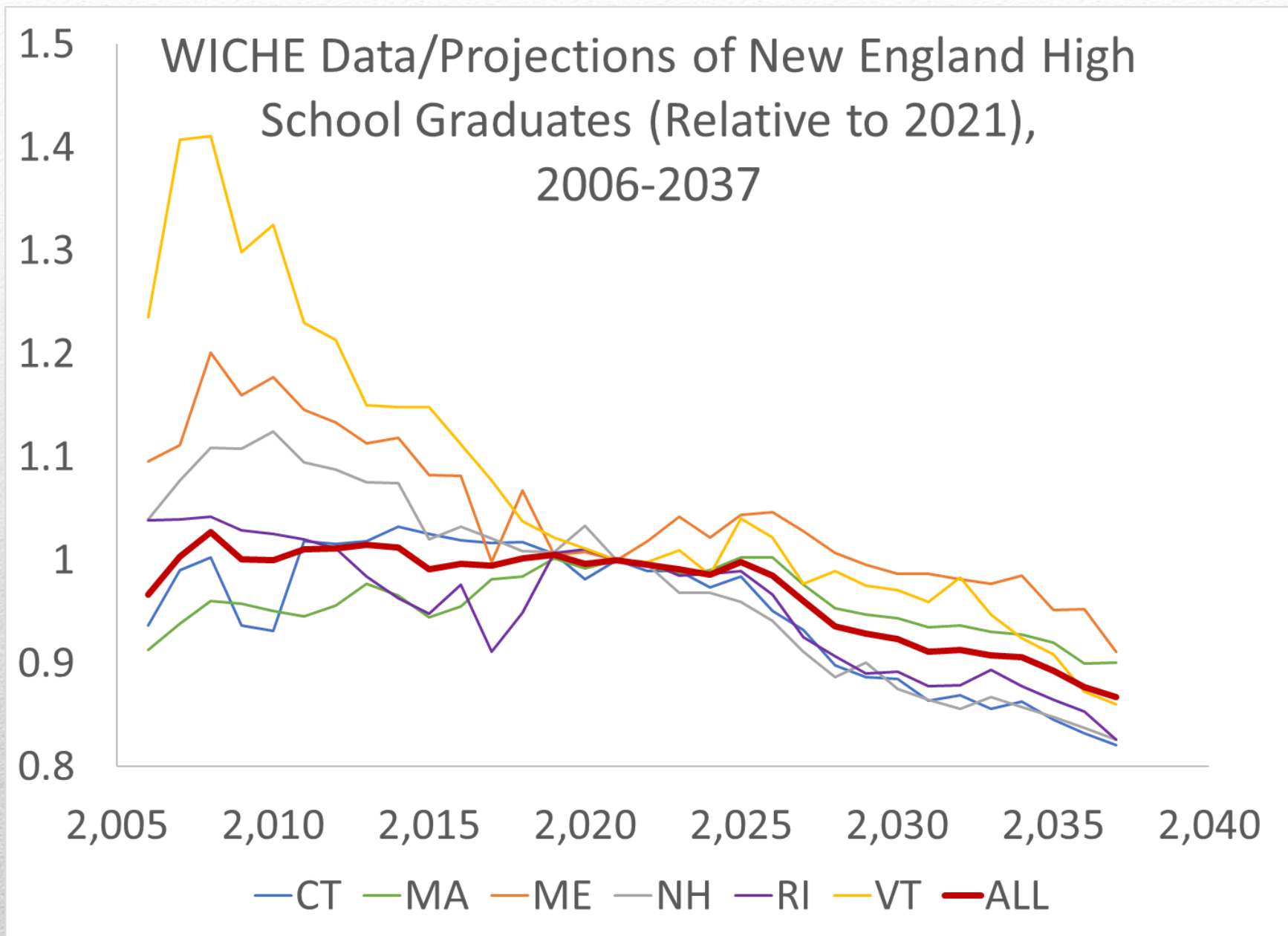
Source: Kenneth M. Johnson (2021)

Total Fertility Rate per 1000 Women, 2017

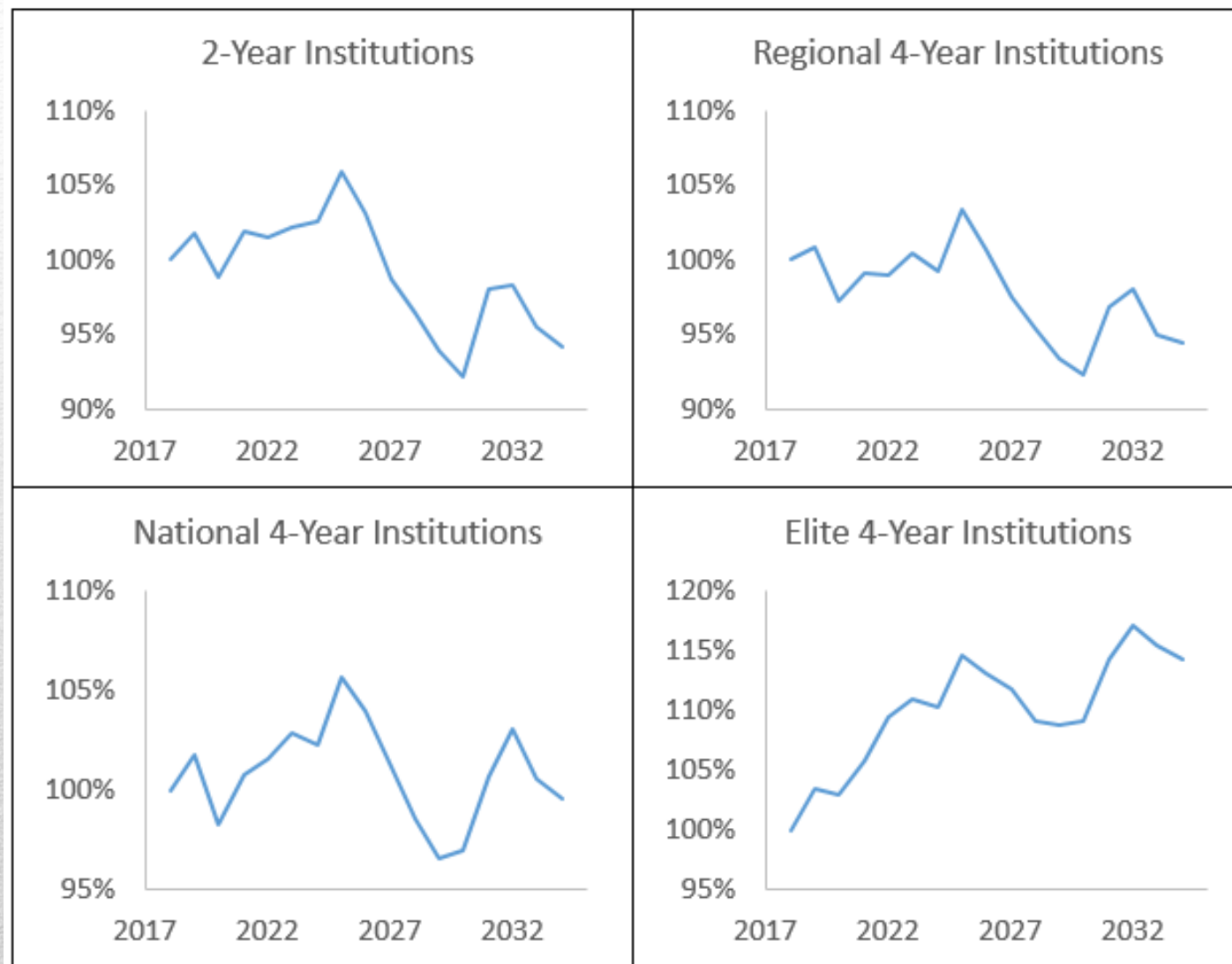


Created with mapchart.net ©

Source: National Vital Statistics Reports Vol. 67, no. 8

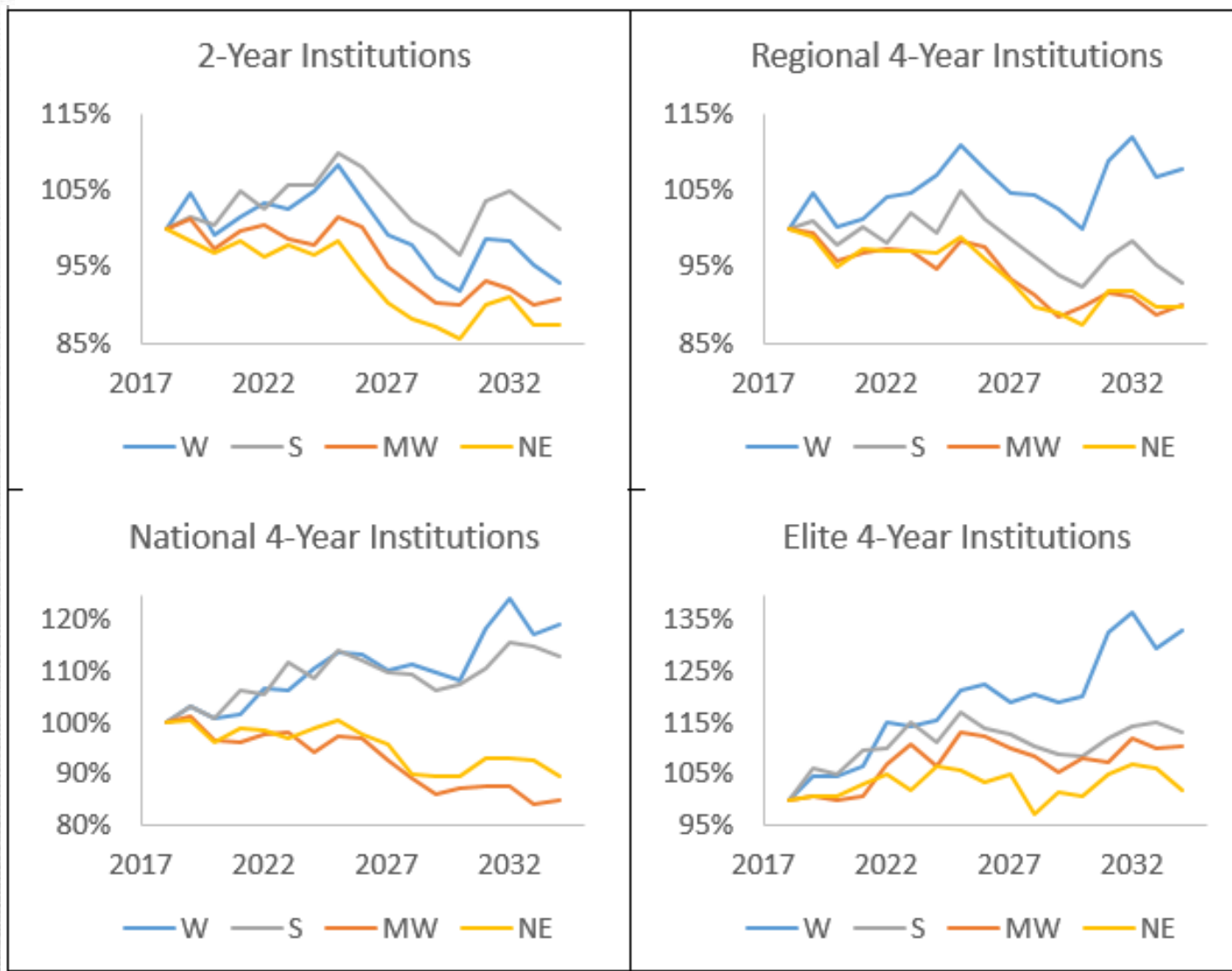


Projected Number of College-Going



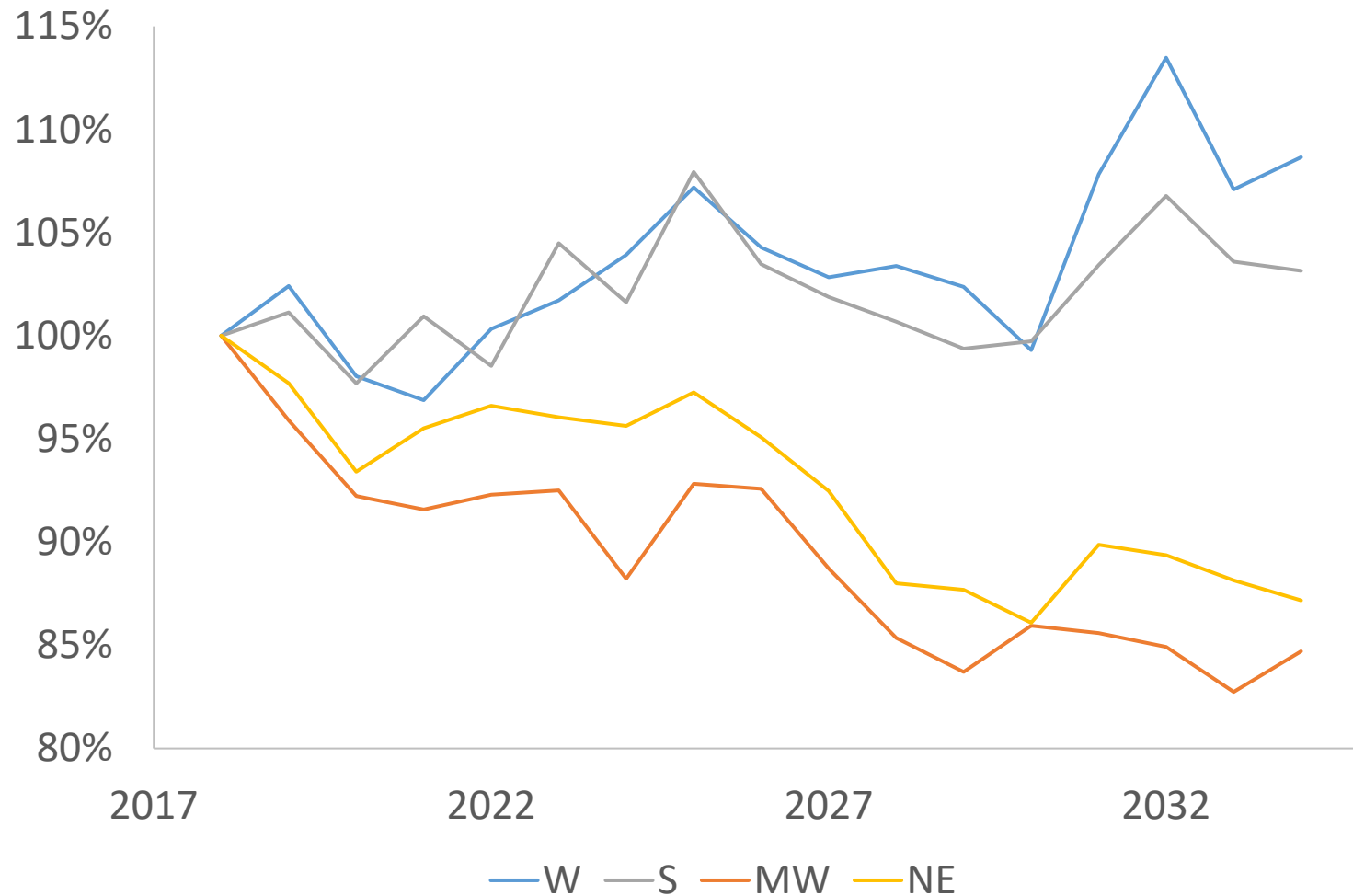
Source: Author's calculations based on data from the American Community Survey (2017), Centers for Disease Control and Prevention National Vital Statistics Reports (2018, 67(7)), 2009 High School Longitudinal Study (restricted and unrestricted), and the Panel Study of Income Dynamics (2011; 2015)

Projected Number of College-Going, by Region



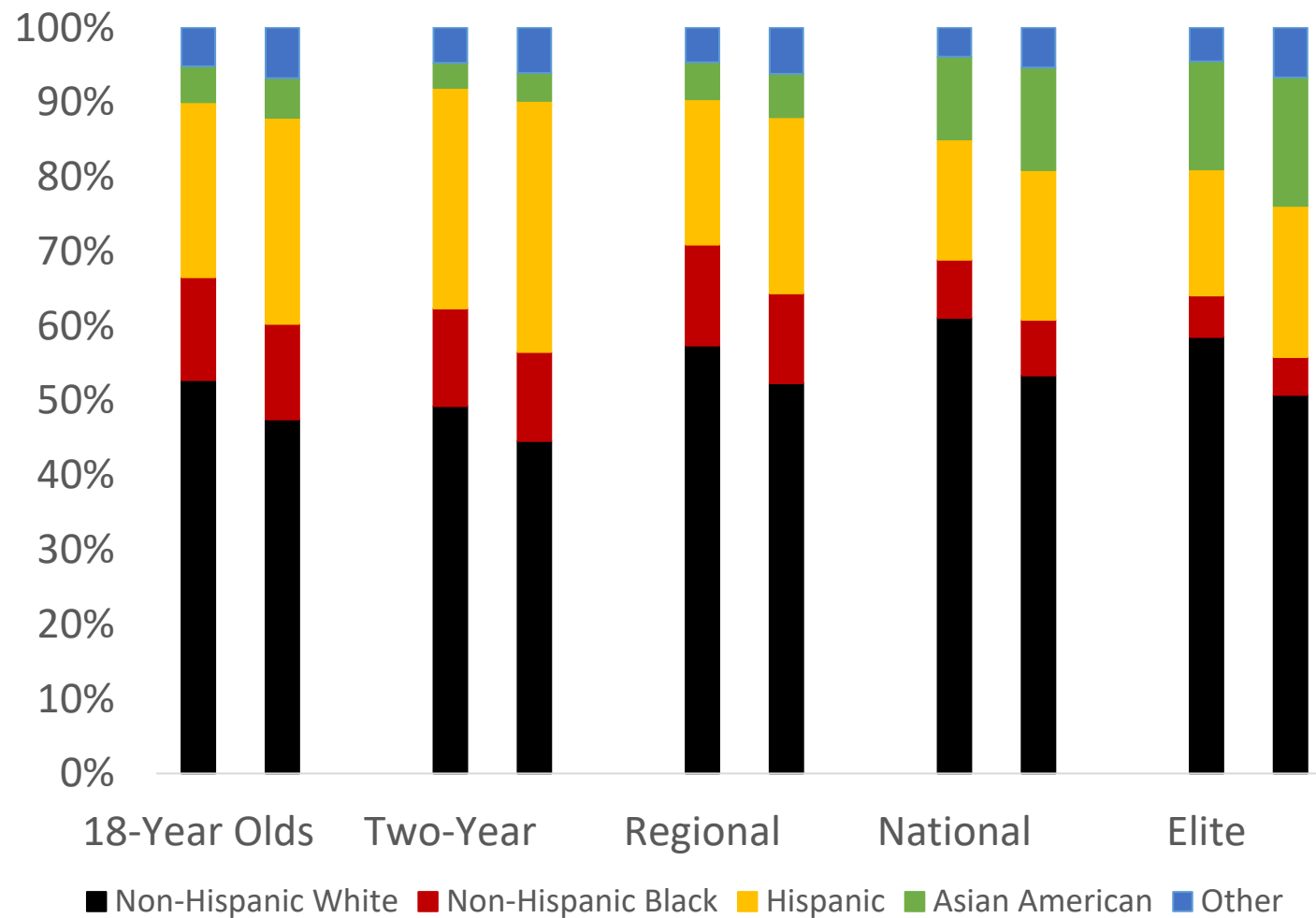
Source: Author's calculations based on data from the American Community Survey (2017), Centers for Disease Control and Prevention National Vital Statistics Reports (2018, 67(7)), 2009 High School Longitudinal Study (restricted and unrestricted), and the Panel Study of Income Dynamics (2011; 2015)

Projected Number of Private 4-Year College-Going, by Region



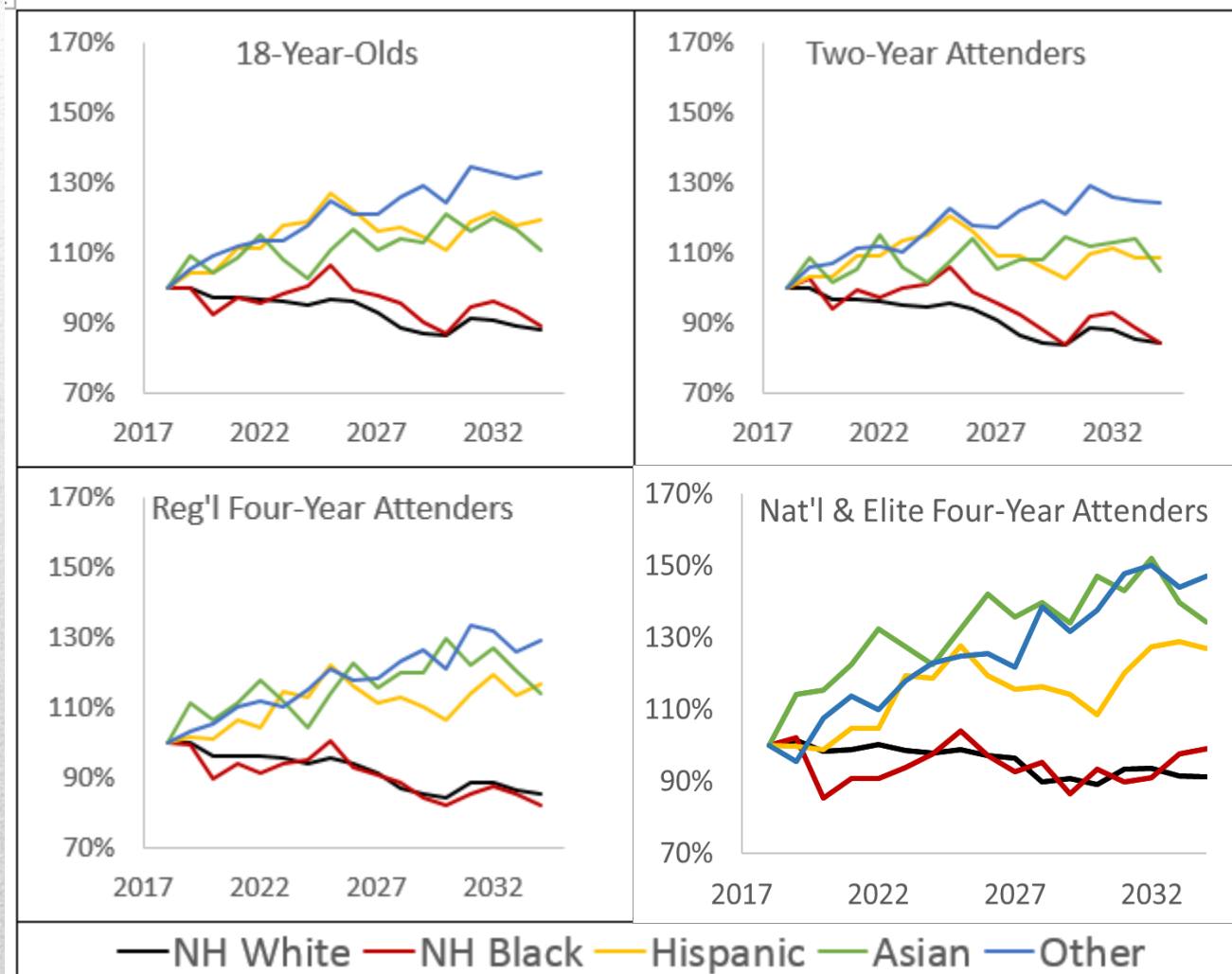
Source: Author's calculations based on data from the American Community Survey (2017), Centers for Disease Control and Prevention National Vital Statistics Reports (2018, 67(7)), 2009 High School Longitudinal Study (restricted and unrestricted), and the Panel Study of Income Dynamics (2011; 2015)

Race/Ethnicity Distribution of College-Going Students, 2018/19 and 2033/34



Source: Author's calculations based on data from the American Community Survey (2017), Centers for Disease Control and Prevention National Vital Statistics Reports (2018, 67(7)), 2009 High School Longitudinal Study (restricted and unrestricted), and the Panel Study of Income Dynamics (2011; 2015)

Projected Number of College-Going by Race/Ethnicity



Source: Author's calculations based on data from the American Community Survey (2017), Centers for Disease Control and Prevention National Vital Statistics Reports (2018, 67(7)), 2009 High School Longitudinal Study (restricted and unrestricted), and the Panel Study of Income Dynamics (2011; 2015)

Transfers & Persistent Students

- Students who transfer
 - In 2-year market: transfer subset stronger than others in NE & W
 - In 4-year market: transfer subset weaker than others in S
- Students who persist
 - Start at 2-year: persistent subset much weaker than others in NE & W
 - Start at 4-year: persistent subset stronger than others in S

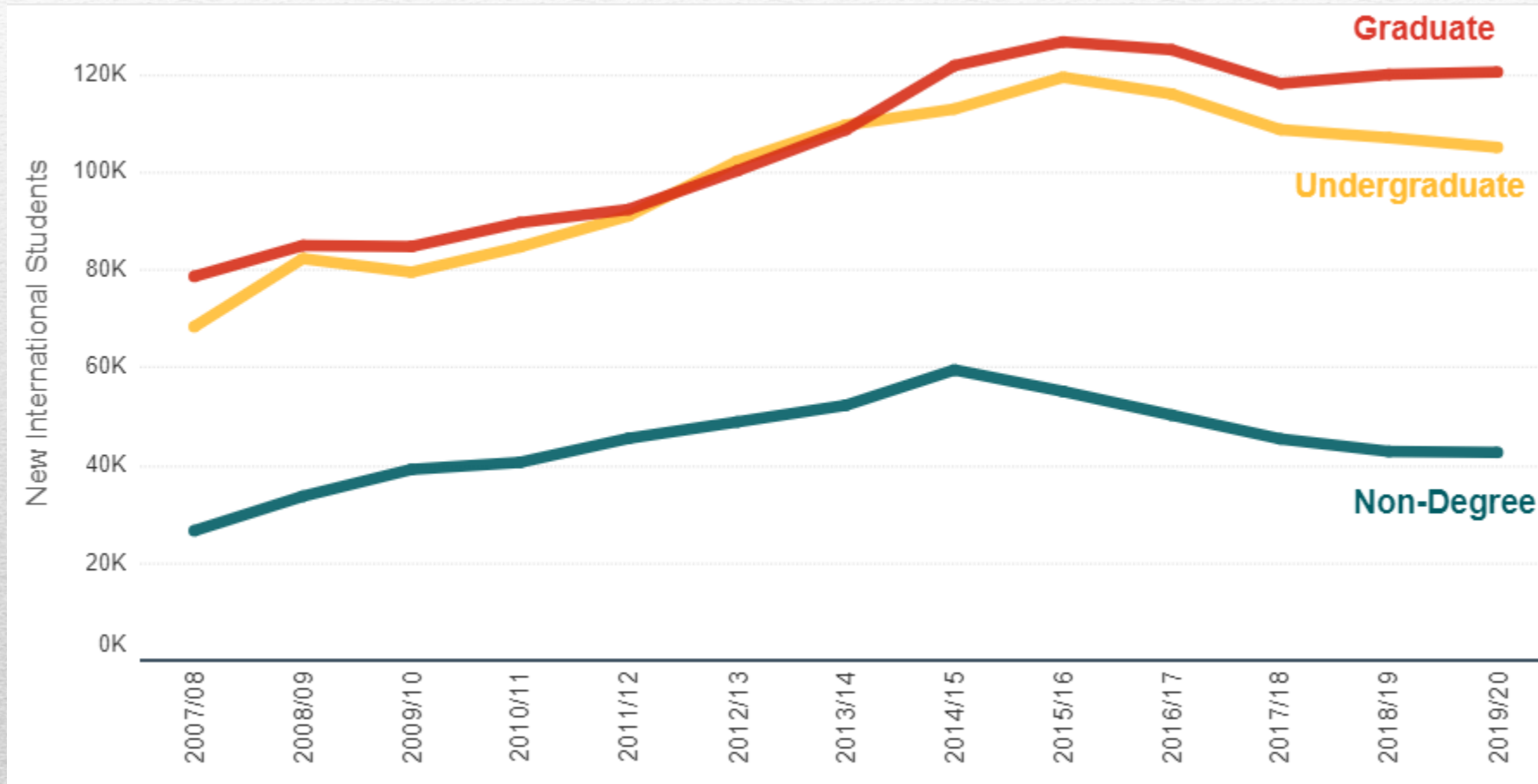
Topline Takeaways

- Demographic change promises real challenges (Can't ignore WICHE.)
- Increasing return to prestige...if attitudes don't change
- Race/ethnicity compositional changes aren't huge, but are persistent

Higher Ed Responds: The Agile College

International Student Recruitment

New International Student Enrollments 2007/08-2018/19



Source: Institute of International Education (n.d.)

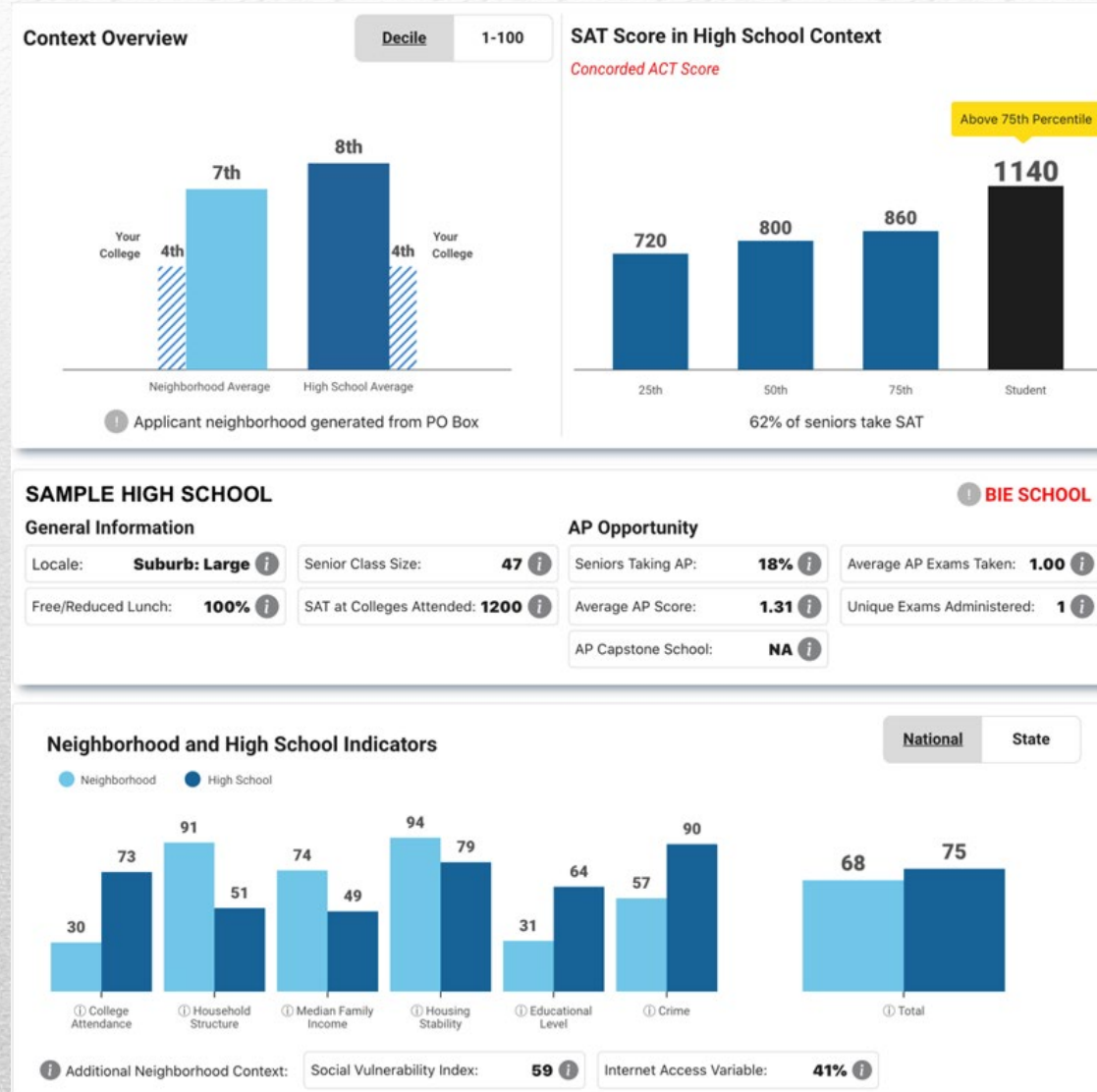
A Turn to the Adult Learner



Pam Eddinger
President, Bunker Hill
Community College

“Unless we have had professional development along the way that invites us to think about equity work, a lot of educators are caught within the questions ‘Why aren’t you bringing me the right students? What is wrong with students today?’... Unless you are deeply reflective institutionally, you don’t go to question [ingrained practices].”

Renewed Urgency to Access Agenda



Renewed Urgency to Access Agenda

OFFICIAL NEWS RELEASES

New John Dee Bright College at Drake University to Offer Two-Year Degrees

🕒 SEPTEMBER 1, 2020



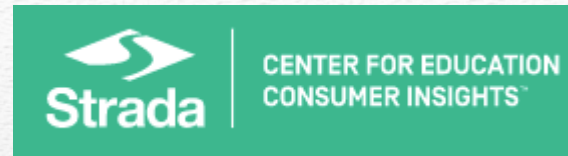
John Dee
Bright College

Drake
UNIVERSITY

Attention on Retention



Academic Programming



“**Seventy percent** of those who had both an associate degree and a nondegree credential said their education made them an attractive job candidate, compared to **43 percent** of associate degree holders without a nondegree credential.”



Academic Programming



Downsizing



AAUP to Investigate COVID-19
'Crisis in Academic Governance'

Covid-19 Reversed Decades of Job Growth

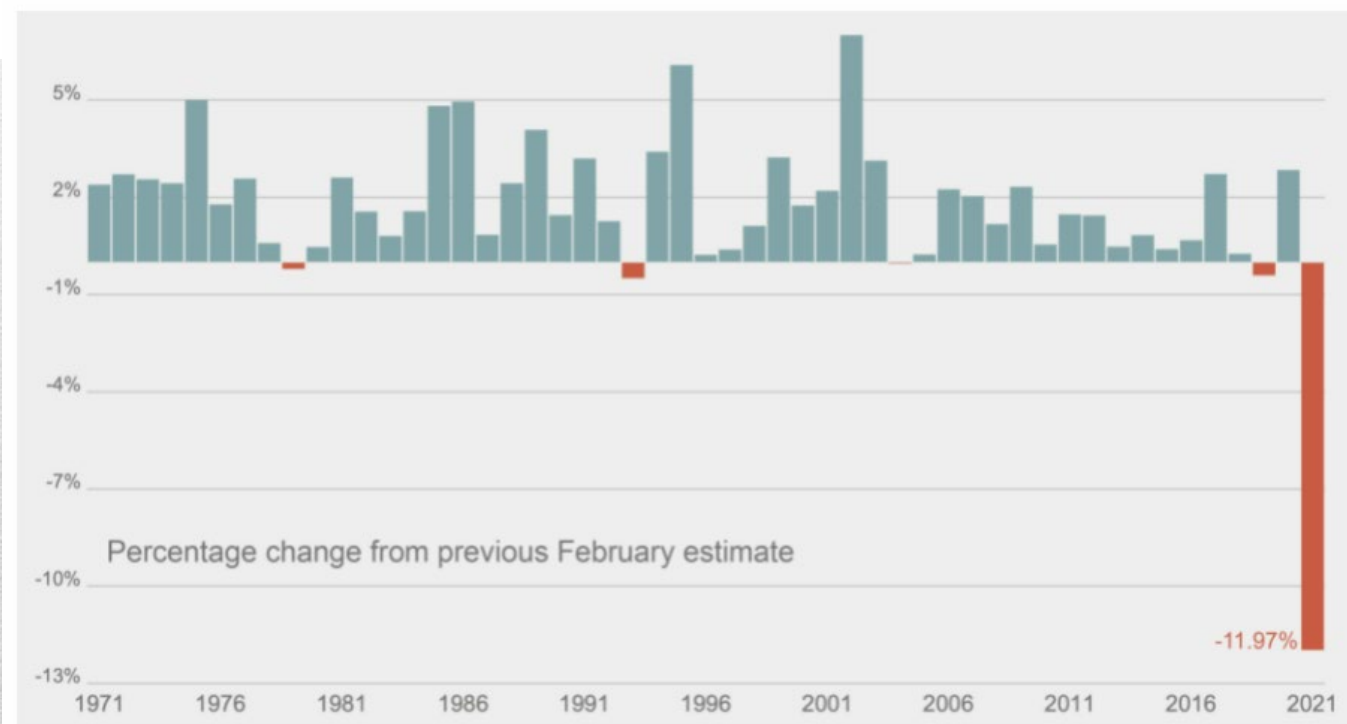


Chart by Dan Bauman | Source: Department of Labor

Chronicle of Higher Education April 20, 2021

Merging/Partnering

SeaChange

ECMC
Foundation

TRANSFORMATIONAL
PARTNERSHIPS FUND

THE
KRESGE
FOUNDATION

Ascendium®

Collaboration



Covid Connections

BROOKINGS

AI POLICY 2020 CITIES & REGIONS GLC

SERIES: Middle Class Memos



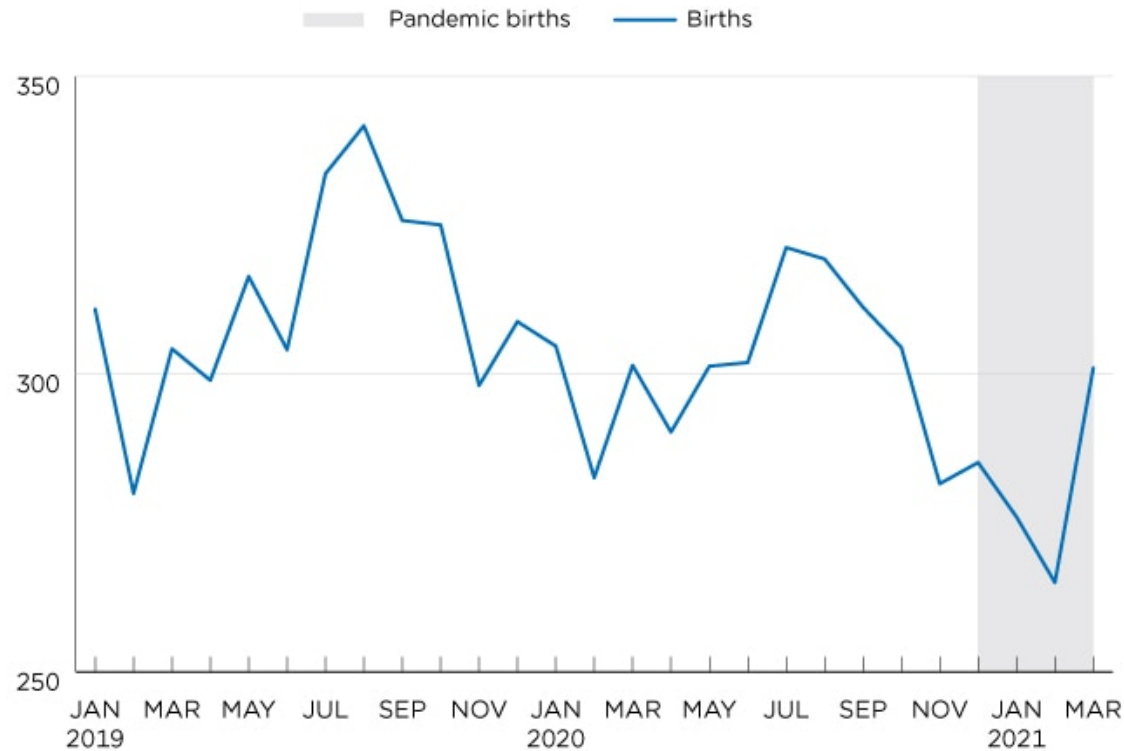
REPORT

Half a million fewer children? The coming COVID baby bust

Melissa S. Kearney and Phillip B. Levine · Monday, June 15, 2020

Covid Connections

U.S. Births by Month: January 2019-March 2021
(In thousands)

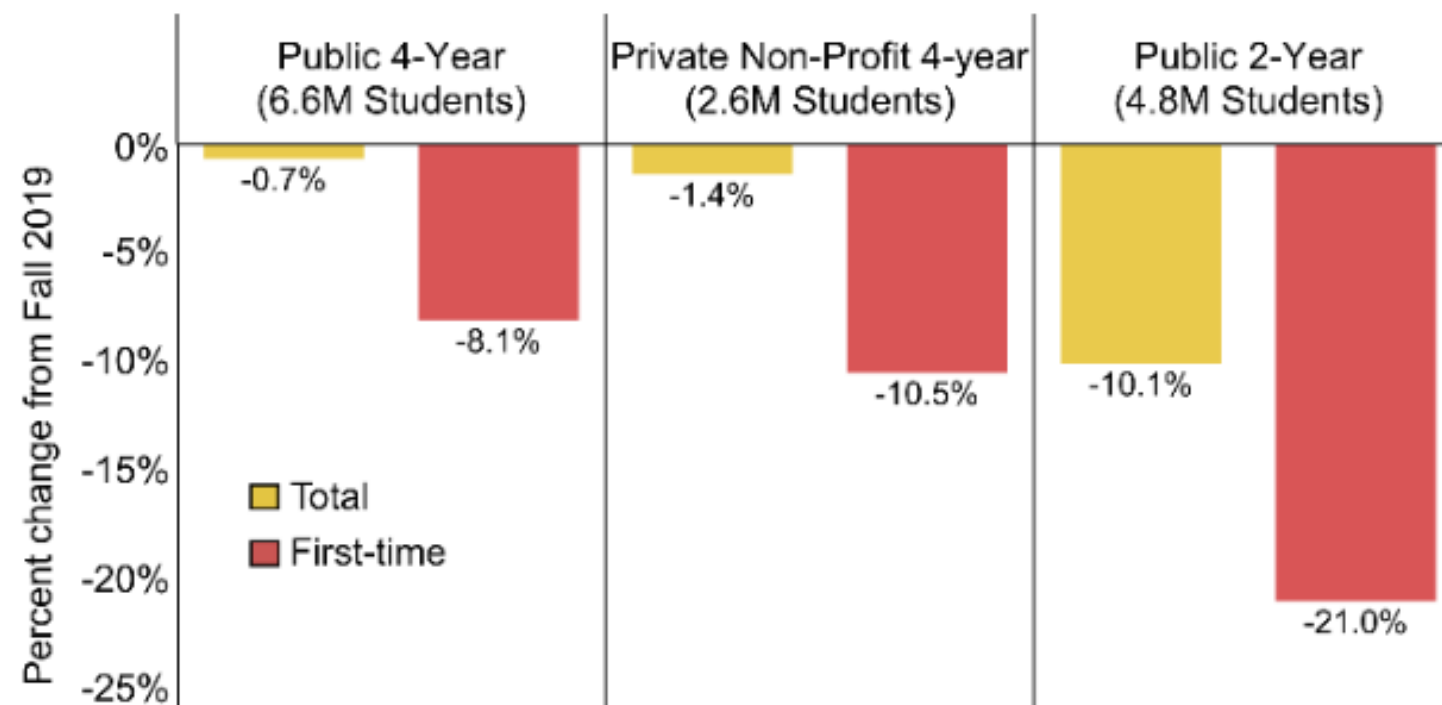


Source: National Center for Health Statistics.

Covid Connections

CHANGE IN FALL 2020 COLLEGE ENROLLMENT

TOTAL AND FIRST-TIME UNDERGRADUATE STUDENTS BY SECTOR

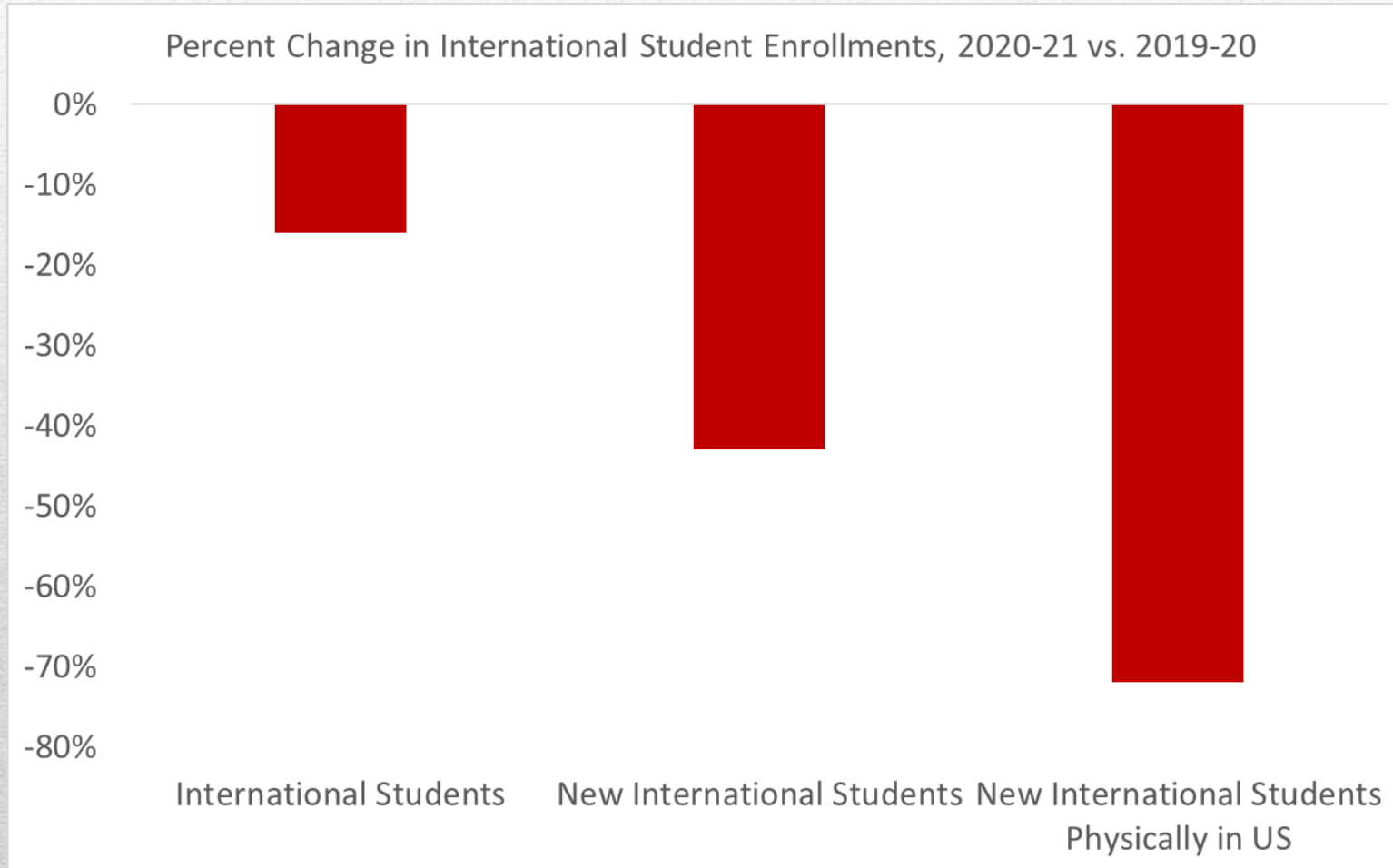


Notes: Fall 2020 enrollment shown in parentheses. In fall 2019, first-time students made up 18% of public two-year students as compared with 15% and 16% of public and private non-profit four-year students.

Source: National Student Clearing House Research Center, *Term Enrollment Estimates Fall 2020*

EconoFact econofact.org

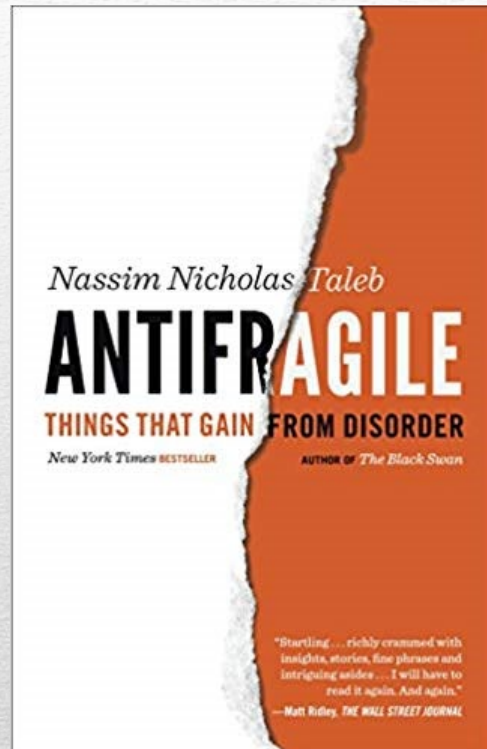
Covid Connections



Institute of International Education (2021)

Covid Connections

- Effective teaching and learning is student-centered
- Retention is a holistic problem with holistic solutions
- Higher education can be agile
- Investment in shared governance is critical



“Antifragility is beyond resilience or robustness. The resilient resists shocks and stays the same; the antifragile gets better.”